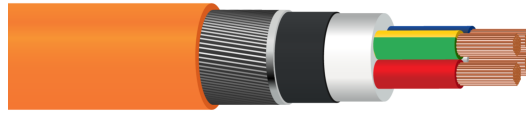


Armoured AS/NZS 5000.1 XLPE PVC 1kV Cable-16mm² to 240mm²



Description

Armoured AS/NZS 5000.1 XLPE PVC Cable | 1kV | Power Distribution

Key Features



Voltage Rating
600/1000 Volts



Minimum Bending Radius
10 x Overall Diameter



Temperature Limits
Maximum operating temperature: +90°C

Core Colours

3 Cores plus reduced earth -	Red	White	Blue	Green Yellow	
4 Cores plus reduced earth -	Red	White	Blue	Black	Green Yellow

Standards

- AS/NZS 1125
- AS/NZS 3008
- AS/NZS 5000.1

Construction

- **Conductor:** Stranded copper conductor
- **Insulation:** Cross Linked polyethylene (XLPE)
- **Bedding:** Polyvinyl Chloride (PVC)
- **Armour:** Steel Wire Armour (SWA)
- **Outer Sheath:** Polyvinyl Chloride (PVC)
- **Sheath Colour:** Orange

QA Lab

Cleveland Cable Test & Training Lab

Our state-of-the-art cable testing facility ensures that every cable meets the highest standards of quality and compliance through continuous, rigorous testing. Where applicable, cables are independently tested and certified by BASEC to ensure full compliance.



CPR

Cleveland Cable Company is committed to compliance with the Construction Products Regulation (CPR). Where applicable, all cables manufactured after 1st July 2017 have been assessed in accordance with CPR requirements, with full supporting documentation available.



Our Sustainability Commitment

We are committed to the journey to Net Zero as a business partner, an employer and a community member.

By thinking and acting sustainably, we deliver excellent customer service while reducing carbon emissions in collaboration with our customers and suppliers.



ecovadis

Cleveland Cable Company has been independently assessed by EcoVadis, a globally recognised provider of business sustainability ratings. Our score places us among the top 35% of companies evaluated worldwide, reflecting our strong commitment to environmental, social, and ethical performance

ecovadis

Armoured AS/NZS 5000.1 XLPE PVC 1kV Cable-16mm² to 240mm² - Dimensions

Reference	Conductor Size (mm2)	No Of Cores	Stranding(mm)	Insulation Thickness (mm)	Overall Diameter(mm)	Weight(Kg/Km)
NZS5000XLPE/SWA/P VC1KV4X16	16/6	4	7/1.70	0.7	22.7	1280
NZS5000XLPE/SWA/P VC1KV4X25	25/6	4	7/2.14	0.9	26.8	1850
NZS5000XLPE/SWA/P VC1KV4X35	35/10	4	7/2.65	0.9	28.8	2320
NZS5000XLPE/SWA/P VC1KV4X50	50/16	4	19/1.89	1.0	32.0	2940
NZS5000XLPE/SWA/P VC1KV4X70	70/25	4	19/2.24	1.1	38.4	3885
NZS5000XLPE/SWA/P VC1KV4X95	95/25	4	19/2.65	1.1	43.1	5225
NZS5000XLPE/SWA/P VC1KV4X120	120/35	4	19/2.94	1.2	45.5	5770
NZS5000XLPE/SWA/P VC1KV4X150	150/50	4	19/3.28	1.4	51.5	7570
NZS5000XLPE/SWA/P VC1KV4X185	185/70	4	37/2.65	1.6	56.5	9230
NZS5000XLPE/SWA/P VC1KV4X240	240/95	4	37/2.94	1.7	63.5	11750
NZS5000XLPE/SWA/P VC1KV5X16	16/6	5	7/1.70	0.7	26.5	1725
NZS5000XLPE/SWA/P VC1KV5X25	25/6	5	7/2.14	0.9	29.5	2340
NZS5000XLPE/SWA/P VC1KV5X35	35/10	5	7/2.65	0.9	31.5	2610
NZS5000XLPE/SWA/P VC1KV5X50	50/16	5	19/1.89	1.0	36.5	3865
NZS5000XLPE/SWA/P VC1KV5X70	70/25	5	19/2.24	1.1	42.0	5140
NZS5000XLPE/SWA/P VC1KV5X95	95/25	5	19/2.65	1.1	46.0	5900
NZS5000XLPE/SWA/P VC1KV5X120	120/35	5	19/2.94	1.2	52.0	9100
NZS5000XLPE/SWA/P VC1KV5X150	150/50	5	19/3.28	1.4	57.0	10420
NZS5000XLPE/SWA/P VC1KV5X185	185/70	5	37/2.65	1.6	63.0	11600
NZS5000XLPE/SWA/P VC1KV5X240	240/95	5	37/2.94	1.7	70.0	14700

THE INFORMATION CONTAINED WITHIN THIS DATASHEET IS FOR GUIDANCE ONLY AND IS SUBJECT TO CHANGE WITHOUT NOTICE OR LIABILITY. WE BELIEVE THE INFORMATION IS CORRECT AT THE TIME OF PUBLICATION. PLEASE NOTE WHEN SELECTING CABLE ACCESSORIES THAT ACTUAL CABLE DIMENSIONS MAY VARY DUE TO MANUFACTURING TOLERANCES.

