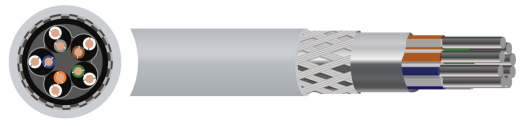


Belden Equiv 8105



Description

Cleveland Cable Company supplies 8105 equivalent multipair cables, designed as premium low-capacitance data cables for high-speed, extended-distance digital communications and instrumentation systems. These cables feature five twisted pairs of 24 AWG plain or tinned flexible stranded copper conductors, insulated with a specialized foamed polyethylene compound for superior protection against electromagnetic interference, comprising a dual-layer overall screen of aluminum foil tape and tinned copper wire braid.

These cables are suited for installation in internal dry or damp environments, offering reliable data logging and high-rate signal security, and are purpose-built to withstand severe electrical noise inside congested industrial enclosures. With an operating voltage of 300V and a temperature range of -30°C to +80°C, they are ideal for RS-232 and RS-422 data networks and low-voltage industrial control loops.

For optimal performance, these cables require careful installation, maintaining a minimum bending radius of ten times the overall diameter, with the integrated drain wire correctly terminated to ensure shielding and ground continuity. The range complies with international benchmarks, meeting the fire safety requirements of UL Style 2919 (AWM) and NEC Type CM ratings, alongside RoHS environmental directives

Key Features



Voltage Rating
300 Volts



Minimum Bending Radius
10 x Overall Diameter



Temperature Limits
Temperature Range: -30°C to +80°C

Core Colours

Pair 1:	White	Blue	White	
Pair 2:	White	Orange	White	
Pair 3:	White	Green	White	
Pair 4:	White	Brown	White	
Pair 5:	White	Grey	Grey	White

Standards

Construction

- **Conductor:** Stranded tinned copper
- **Insulation:** Foam Polyethylene (FPE)
- **Insulation Screen:** Aluminium/Polyester Tape Screen (AL/PET)
- **Drain Wire:** Tinned Copper
- **Braiding:** Tinned Copper Wire Braiding (TCWB)
- **Outer Sheath:** Polyvinyl Chloride (PVC)
- **Sheath Colour:** Grey

QA Lab

Cleveland Cable Test & Training Lab

Our state-of-the-art cable testing facility ensures that every cable meets the highest standards of quality and compliance through continuous, rigorous testing. Where applicable, cables are independently tested and certified by BASEC to ensure full compliance.



CPR

Cleveland Cable Company is committed to compliance with the Construction Products Regulation (CPR). Where applicable, all cables manufactured after 1st July 2017 have been assessed in accordance with CPR requirements, with full supporting documentation available.



Our Sustainability Commitment

We are committed to the journey to Net Zero as a business partner, an employer and a community member.

By thinking and acting sustainably, we deliver excellent customer service while reducing carbon emissions in collaboration with our customers and suppliers.



ecovadis

Cleveland Cable Company has been independently assessed by EcoVadis, a globally recognised provider of business sustainability ratings. Our score places us among the top 35% of companies evaluated worldwide, reflecting our strong commitment to environmental, social, and ethical performance

ecovadis

Belden Equiv 8105 - Dimensions

Reference	AWG Stranding	No Of Pairs	Overall Diameter(mm)	Weight(Kg/Km)	Diameter of Strands (mm)
CD8105MULTI	AWG 24(7)	5	7.70	62	0.031

THE INFORMATION CONTAINED WITHIN THIS DATASHEET IS FOR GUIDANCE ONLY AND IS SUBJECT TO CHANGE WITHOUT NOTICE OR LIABILITY. WE BELIEVE THE INFORMATION IS CORRECT AT THE TIME OF PUBLICATION. PLEASE NOTE WHEN SELECTING CABLE ACCESSORIES THAT ACTUAL CABLE DIMENSIONS MAY VARY DUE TO MANUFACTURING TOLERANCES.